

A man with dark, wavy hair and a beard is shown in profile, playing a white PRS Silver Sky electric guitar. He is wearing a white t-shirt, dark pants, and large black headphones with a blue light on the side. He has a Mickey Mouse pin on his shirt and a small tattoo on his left wrist. The background is a stage with blue and white lighting.

PRS PAUL
REED
SMITH
GUITARS®

"After playing the Silver Sky designed for the 2023 Dead & Company summer tour, I realized the guitar was special. It quickly became apparent this wasn't just a tool for one particular job but could be extremely versatile in other players' hands. I'm excited to hear the music that's made on these guitars."

- John Mayer

Photo by: Chloe Weir

PRS "DEAD SPEC" SILVER SKY

CONFIDENTIAL for release on November 14th at noon EST

Thank you for your support. We have put a lot of thought and care into launching the products in this package. We also provide marketing assets and product in advance so that our B2B partners can launch with us and capitalize on the launch. Please honor the release date and time on the cover of this document.



The PRS “Dead Spec” Silver Sky was designed for John Mayer’s prominent work with Dead & Company’s last tour. Paying homage to Jerry Garcia’s iconic “Alligator” guitar tones, the Dead Spec Silver Sky is a modded version of Mayer’s signature ax with significant spec changes.

The foundation of the “Dead Spec” Silver Sky is a lightweight Swamp Ash body (rather than alder) finished in Moc Sand satin nitro that is thin and strikingly sinks into the ash wood grain. The bridge is a modified PRS patented Gen III Tremolo that has been screwed to the body, effectively rendering it a string-through hardtail bridge. Keeping the tremolo’s brass block in the equation adds a musical warmth to the guitar. At the other end of the strings are a brass nut and string retainer bar, which also contribute to the guitar’s resonance and tone.

Perhaps most notably, the Dead Spec Silver Sky’s jack plate has been swapped out for a brass-plate Alembic Blaster preamp. This preamp can be used as a straight boost but has an internal pot that allows players to add between 3 - 14 dB of gain to the guitar when turned on. This not only gives the Dead Spec Silver Sky added punch while maintaining crisp note separation, but it compensates for the capacitance that comes with long stage cables as well. The circuit is bypassed when in the off position.

Only 1,000 PRS “Dead Spec” Silver Skys will be made. Shipping November 2023 – March 2024.

“After playing the Silver Sky designed for the 2023 Dead & Company summer tour, I realized the guitar was special. It quickly became apparent this wasn’t just a tool for one particular job but could be extremely versatile in other players’ hands. I’m excited to hear the music that’s made on these guitars.” – John Mayer

Specifications

BODY

Body Construction	Solidbody
Body Wood	Swamp Ash
Top Carve	Flat Top
Finish	Satin Nitro

NECK

Number of Frets	22
Fret Wire	PRS Medium
Scale Length	25.5" [647.7 mm]
Neck Wood	Maple
Neck Construction	Scarfed
Truss Rod	PRS Double-Acting
Neck Shape	635 JM-R
Neck Width at the Nut	1 21/32"
Neck Depth at the ½ Fret	55/64"
Neck Width at the Body	2 15/64"
Neck Depth at the 12 ½	63/64"
Fretboard Wood	Rosewood
Fretboard Radius	7.25"
Fretboard Inlay	Birds
Headstock Logo	Signature, Decal

NECK/BODY ASSEMBLY

NBA Type	Bolt-On
----------	---------

HARDWARE

Bridge	PRS Patented Tremolo, Gen III, Surface-Mounted
Tuners	Vintage-Style, Locking
Hardware Type	Nickel
Nut	Brass w/ String Retainer

ELECTRONICS

Treble Pickups	635 JM
Bass Pickups	635 JM
Controls	635 JM
Preamp	Alembic Blaster, Brass

ADDITIONAL INFORMATION

Strings	10's
Tuning	Standard (6 String): E-A-D-G-B-E
Case	Hard Shell Case

FINISHES

Moc Sand Satin

ADDITIONAL INFORMATION

P1 (down):	treble pickup
P2:	treble and middle pickup
P3:	middle pickup
P4:	middle and bass pickup
P5 (up):	bass pickup



Surface-Mounted Bridge

Essentially a hardtail adaptation of the PRS patented tremolo, this bridge adds warmth and promotes the resonance of the guitar.



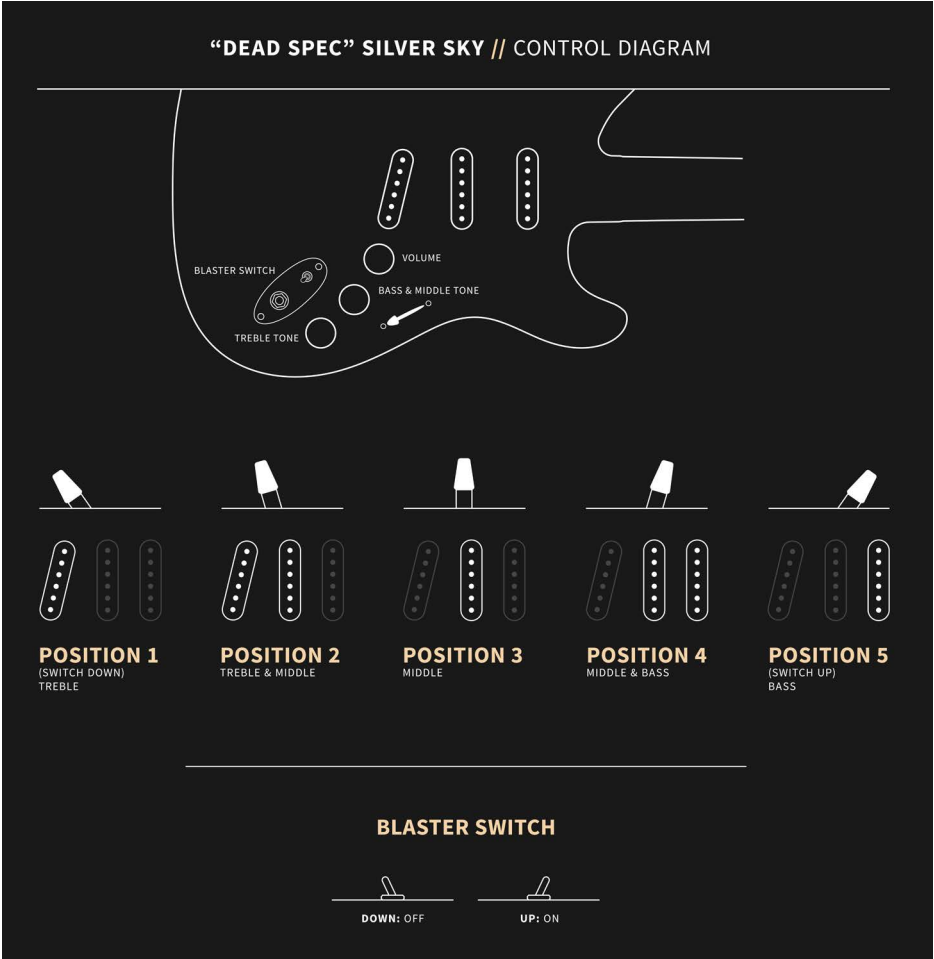
Brass Nut/Retainer Bar

The brass nut and retainer bar bring warm, piano-like tone while promoting string vibration and resonance.



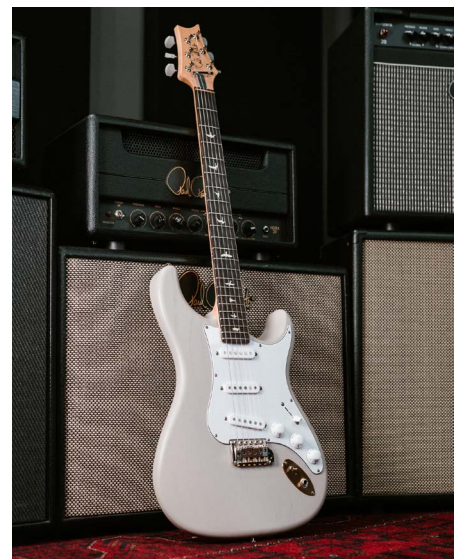
Alembic Blaster

This preamp increases output with 3-14dB of adjustable gain and lowers the effective capacitance of your cable, so you can play with courage.





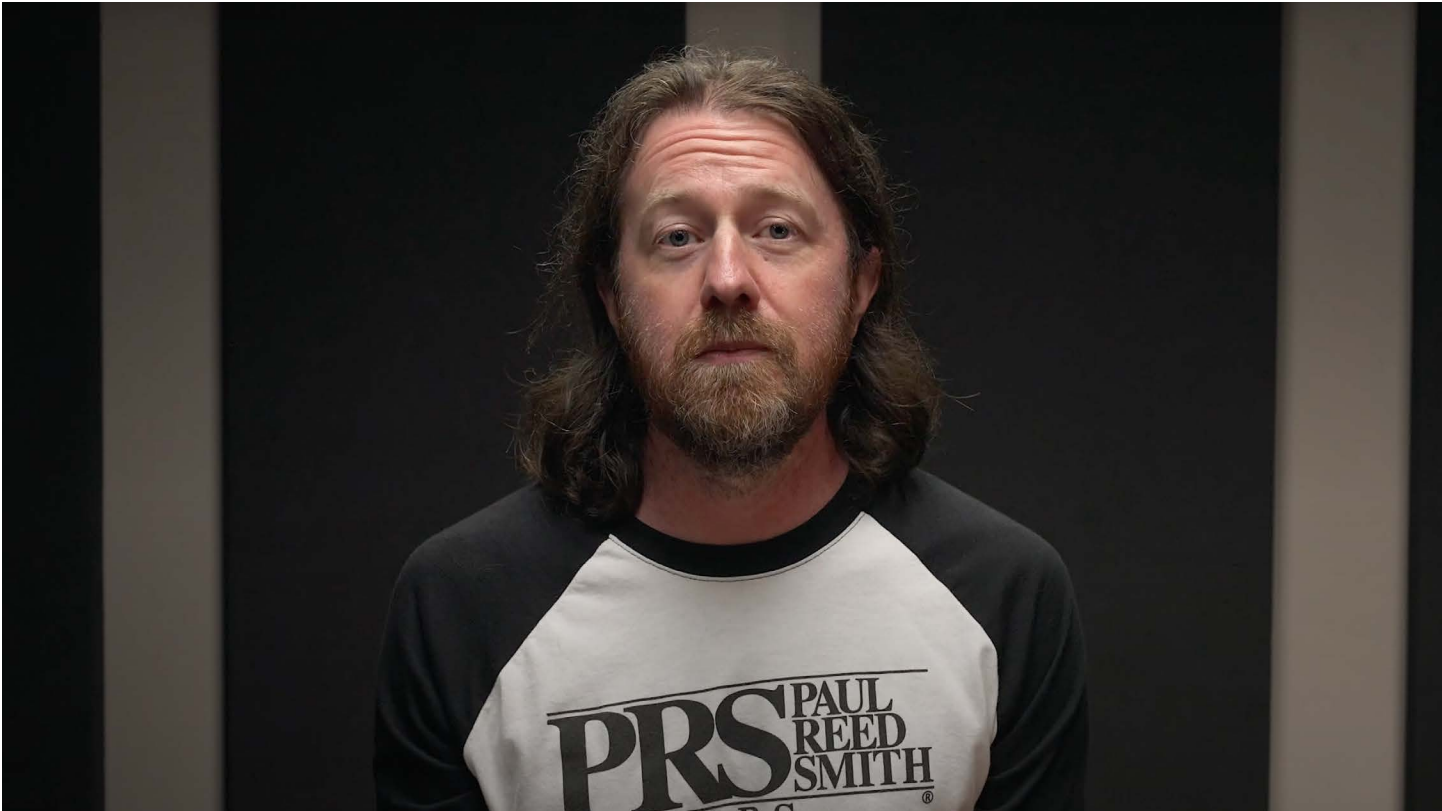
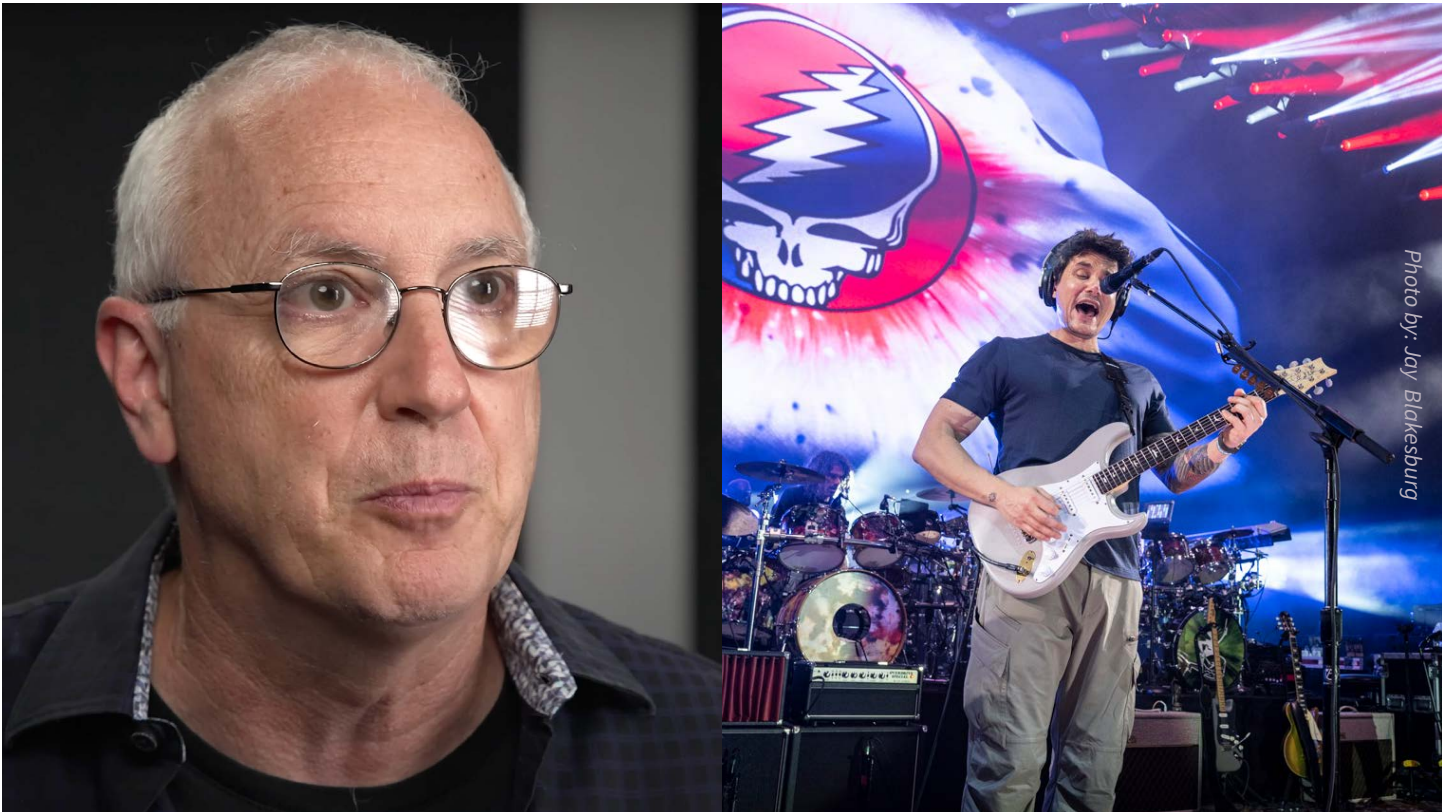
[CLICK HERE TO ACCESS IMAGES](#)



[CLICK HERE TO ACCESS LIFESTYLE IMAGES](#)

SOCIAL COPY:

Meet the @prsguitars "Dead Spec" Silver Sky. Paying homage to the great Jerry Garcia and John Mayer's work with Dead & Company, only 1,000 of these guitars will be manufactured.



Introducing the "Dead Spec" Silver Sky

POSTED OCT 20, 2023

FEATURED STORIES / ARTIST / BEHIND THE GEAR



The PRS "Dead Spec" Silver Sky was designed for John Mayer's prominent work with Dead & Company's last tour. Paying homage to Jerry Garcia's iconic "Alligator" guitar tones, the "Dead Spec" Silver Sky is a modded version of Mayer's signature ax with significant spec changes.

The foundation of the "Dead Spec" Silver Sky is a lightweight Swamp Ash body (rather than alder) finished in Moc Sand satin nitro that is thin and strikingly sinks into the ash wood grain. The bridge is a modified PRS patented Gen III Tremolo that has been screwed to the body, effectively rendering it a string-through hardtail bridge. Keeping the tremolo's brass block in the equation adds a musical warmth to the guitar. At the other end of the strings are a brass nut and string retainer bar, which also contribute to the guitar's resonance and tone.

PRS PAUL
REED
SMITH
GUITARS®
